

BEEBE & ASSOCIATES, INC. – COMPANY PROFILE

MICHAEL BEEBE, ASGCA



MICHAEL BEEBE, ASGCA

Michael Beebe has been practicing golf course architecture since 1982 emphasizing fun, playable, site-specific courses for both private and public clients. Beebe grew up in central Indiana where he became fascinated with all things golf at the age of 10. The combination of his passion for the game of golf, working at the local 9-hole public course and his interest in golf course design led to the pursuit of a career in golf course architecture.

A landscape architecture graduate of Ball State University in 1982, Mike immediately went to work for golf course architect Charles Ankrom in Stuart, Florida. He later joined PGA Tour player Mark McCumber's company where he worked for 13 years serving as project architect and Vice President. In 1998, he formed Beebe & Associates, Inc. realizing his dream of starting his own firm. In 2005, Beebe opened Evergreen Engineering Group, Inc. as a companion company providing civil engineering, project management and development consulting to a variety of projects. Along the way, he has developed a reputation for his collaborative approach that emphasizes team work, personal service, communication and a traditional design philosophy. Mike has a proven track record of delivering projects on schedule and within budget. He couples his creative design skills with experience in project entitlements, project management, landscape architecture/land planning & course operations.

Philosophically, Beebe appreciates the traditional tenets of course architecture represented by strategic elements such as alternative angles, play width, "short grass" and an emphasis on shot making versus length. Additionally, he champions site-specific design and construction solutions, maintenance inspired design features, environmental sustainability and most importantly, courses that are family-friendly and **FUN**.

Beebe is an active member of the American Society of Golf Course Architects (ASGCA) since 1989 where he has served on the Board of Governors. The ASGCA was founded in 1946 as the first professional organization of golf course architects in North America. ASGCA is committed to fostering professionalism amongst its members, growing the game of golf through continued outreach and supporting design excellence by ASGCA members. Beebe is also a registered landscape architect in Florida since 1983. He served 8 years on the Planning and Land Development Regulation Board (PLDRB) for the City of Palm Coast.





Osprey Cove Golf Course – St. Marys, Georgia

BACKGROUND

“The strategy of the golf course is the soul of the game.” – GEORGE C. THOMAS, Jr.

PROFESSIONAL SUMMARY

- 35 years of golf course development experience on a variety of projects including resort, private, daily fee and municipal golf courses.
- Established Beebe & Associates, Inc. in 1998.
- Established Evergreen Engineering Group, Inc. in 2005.
- Member of American Society of Golf Course Architects (ASGCA) since 1989.
- Licensed landscape architect in Florida since 1983.
- Ball State University, Bachelor of Landscape Architecture & Bachelor of Science in Environmental Design - 1982
- My design philosophy encompasses a commitment to making golf fun & family-friendly; an emphasis on site specific design & construction solutions; a sensitivity to maintenance-friendly design features; a mandate for ecologically sustainable golf courses and a passion for strategic design elements.



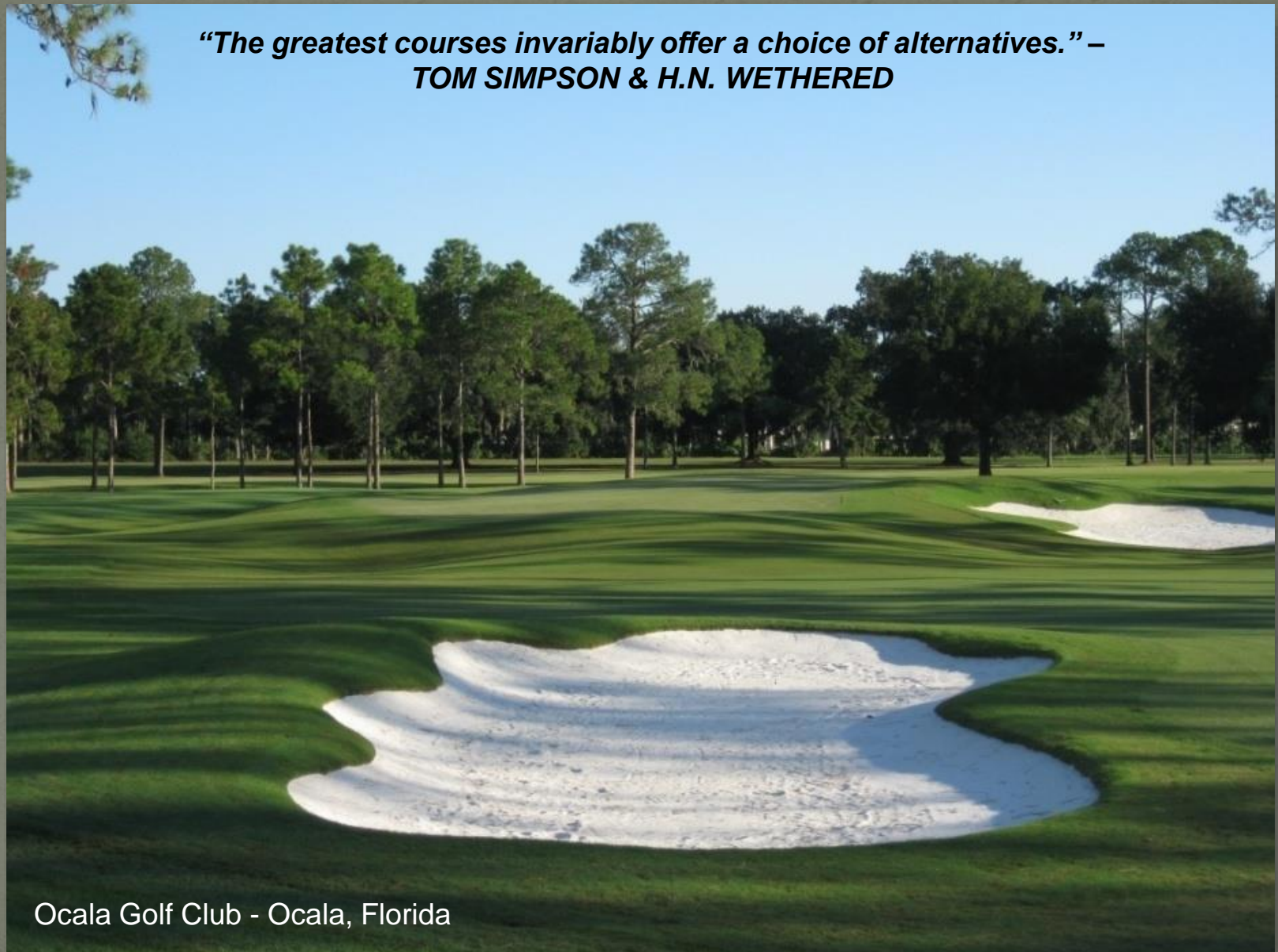
GreyStone Golf Course - Dickson, Tennessee

"In planning a golf course there are no fixed rules to which it is compulsory to conform, and the variety which results is one of the greatest charms of the game." – C.H. ALISON



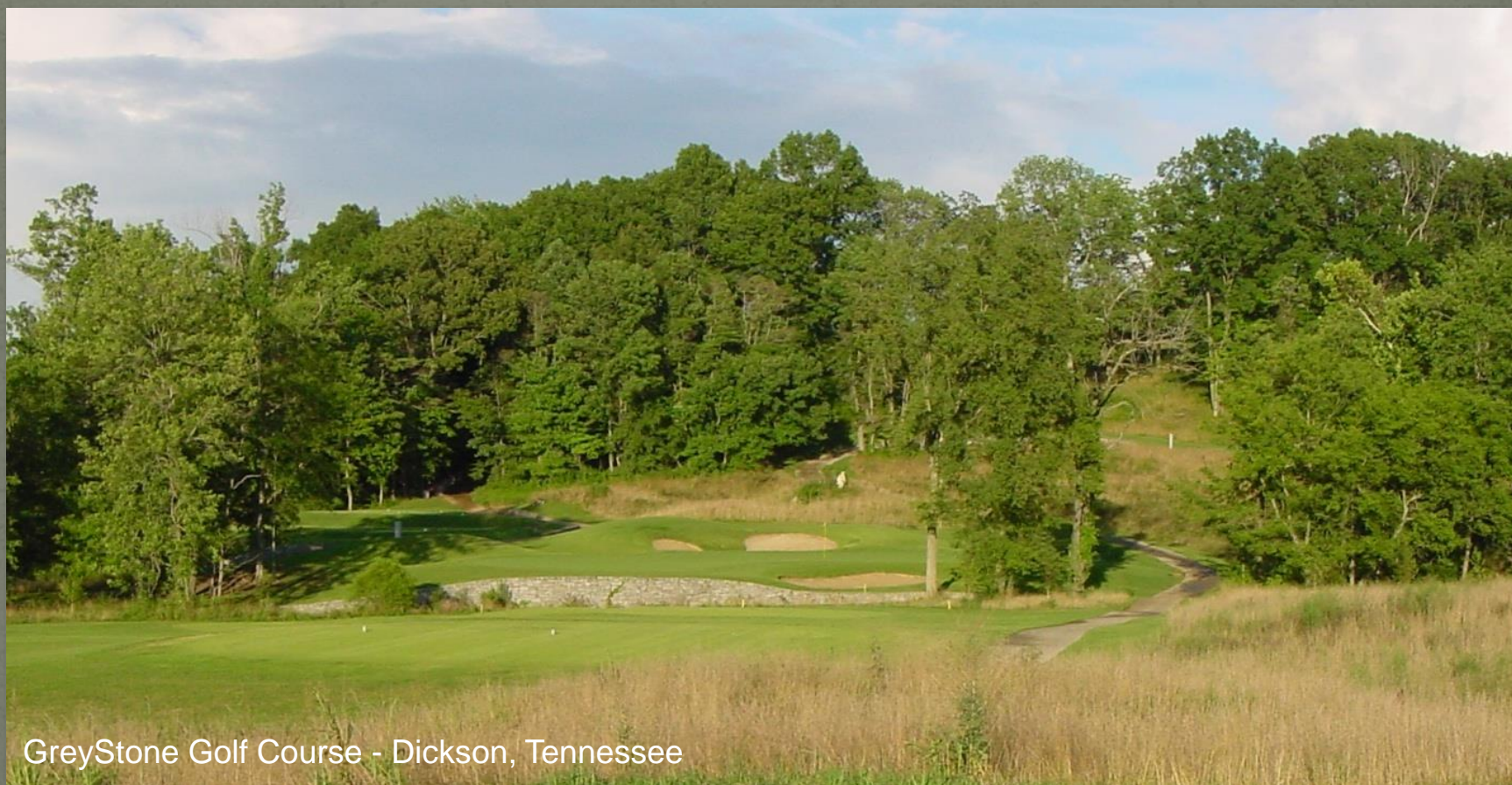
Osprey Cove Golf Course - St. Marys, Georgia

***“The greatest courses invariably offer a choice of alternatives.” –
TOM SIMPSON & H.N. WETHERED***



Ocala Golf Club - Ocala, Florida

*"No reason exists why a golf course should not decorate the landscape rather than disfigure it."
- TOM SIMPSON & H.N. WETHERED*



GreyStone Golf Course - Dickson, Tennessee

“The true hazard should draw the player towards it, should invite the golfer to come as near as he dare to the fire without burning his fingers. The man who can afford to take risks is the man who should gain the advantage.” – JOHN LOW



Hidden Cypress Golf Club - Bluffton, South Carolina



Hidden Cypress Golf Club - Bluffton, South Carolina

***“All artificial hazards should be made to fit into the ground as if placed there by nature. To accomplish this a great art. Indeed, when it is really well done, it is – I think it may truly be said – a fine art, worthy of the hand of a gifted sculptor.”
– ROBERT HUNTER***

"It is impossible in considering types of holes for a course to suggest any positive sequence of alignment, for each layout should be designed to fit the particular ground on which it lies."
- WILLIAM FLYNN



Ocala Golf Club – Ocala, Florida

THE BEEBE APPROACH

“Strive to retain as much of the natural ground formation as possible. The most beautiful courses are the ones that hew most closely to nature.” – STANLEY THOMPSON

TEAMWORK & COLLABORATION – Commitment to collaborate with clients, team approach to problem solving, not ego driven & committed to forging long term relationships.

PERSONAL CUSTOMER SERVICE – Available, attentive, results-driven, responsive & personally involved from start to finish.

COMMUNICATION – Frequent dialogue with client & project team, possess a strong capacity to listen & good at facilitating solutions that best serve the project.

TRADITIONAL DESIGN PHILOSOPHY – Appreciate the traditional tenets of golf course architecture including strategy, alternative angles, playing width, “short grass” for interest & variety, shot making rather than length), site specific design & construction solutions, maintenance friendly & environmentally sustainable, player-friendly & **FUN**.

SCHEDULE & BUDGET MINDED – Proven track record of delivering projects on schedule & within budget, creative design skills coupled with experience in project entitlements, project management, landscape architecture/land planning and course operations.



Edmonton Petroleum Golf & C.C. – Edmonton, Alberta, Canada



Ironwood Golf Course – Gainesville, Florida

NOTES

- Hole #6 is a short par 4 that forces the player to decide how aggressive he wants to be with his drive in order to provide the best angle to approach the green. Several proposed improvements to this hole will insure it remains one of the most enjoyable on the course.
- Expand all existing tees to insure adequate tee surface for this short hole. Add a new "green" tee.
- Raise fairway 18"-24" to alleviate drainage problems and add interest to this fairway. Add inlets and drainage pipe in designated areas to improve drainage.
- Enlarge and re-shape existing fairway bunker on left side of hole.
- Add new fairway bunker on right side of hole approximately 275 yards from "gold" tee. This new bunker adds strategy to the tee shot by forcing the golfer to decide whether to challenge the bunker or play short and safe. The fairway "twists" around the new bunker and narrows from 28 to 18 yards.
- Rebuild the green complex. Enlarge the green and angle it so that it favors a left to right approach shot. Re-do the bunkers to relate to the size and shape of the new green.
- Widen the access to the green from the cart path.
- Create "short grass" areas around the green to provide variety in the type of short shots the golfer can play.
- Extend the fairway mowing pattern all the way to the green to allow the "run-up" approach shot.

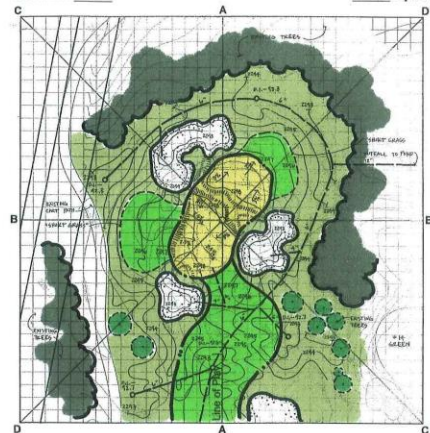


BEEBE & ASSOCIATES, INC.

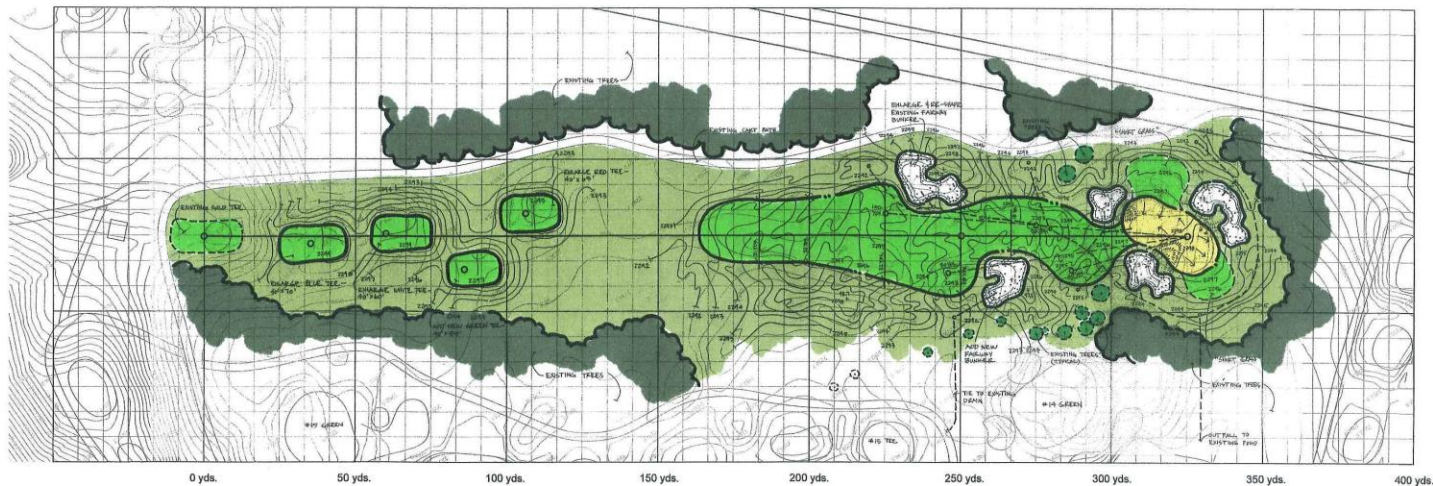
Golf Course Design, Renovation & Development Consulting

Green No. 6

4600 Sq. Ft.



Scale: 1"= 40'



Scale: 1"= 50'

Date: 4-28-00
Scale: As Shown
Created By: JLR
Revisions:



RENOVATION PLAN - HOLE #6

BEEBE & ASSOCIATES, INC.
MICHAEL BEEBE, ASCA
10000 100th Ave. S.W. #200
Edmonton, Alberta T6A 0K1

Edmonton Petroleum Golf & C.C.
Edmonton, Alberta, Canada

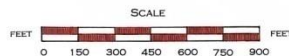
6
Sheet No.

OCALA GOLF CLUB

OCALA, FLORIDA

E. ELLSWORTH GILES
GOLF ARCHITECT
1931

MICHAEL BEEBE, ASGCA
GOLF ARCHITECT
2009

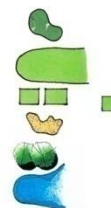


SCORECARD

HOLE	PAR	ORANGE	BLUE	GREEN	YELLOW
1	4	407	382	317	288
2	5	523	503	423	348
3	3	194	147	125	96
4	5	532	487	418	354
5	3	170	148	100	78
6	4	385	358	297	255
7	5	506	451	387	337
8	3	191	161	145	129
9	4	400	349	321	278
OUT	36	3308	2884	2543	2163
10	4	349	311	282	226
11	3	146	112	96	77
12	4	430	388	324	276
13	5	485	450	376	305
14	3	161	135	93	67
15	4	420	384	341	302
16	4	395	361	311	256
17	5	500	456	380	338
18	4	358	333	279	216
IN	36	3244	2930	2484	2083
TOTAL	72	6552	5914	5027	4246

LEGEND

- GREEN
- FAIRWAY
- TEES
- BUNKERS
- TREES
- POND



REPRESENTATIVE WORK EXPERIENCE

“The direct line to the hole is called the line of instinct, and to make a great hole you must break up that line in order to create a line of charm. The line of charm is the provocative path that shaves off distance and provides an ideal line into the green, usually by skirting bunkers and other hazards. The golfer wants the most direct line he can find to the hole, while the architect uses bunkers and other hazards to create risk and reward options that suggest the ideal line for the player, or the line of charm.” – MAX BEHR

The following is a sample of representative projects that **Michael Beebe** has completed.

Edmonton Petroleum Golf & C.C. – 18-hole new, 9-hole addition & renovation
Edmonton, Alberta, Canada

Forest Lake Club – 18 hole renovation
Columbia, SC

Golf Club of Amelia* - 18-hole new
Amelia Island, FL

Golf Club at Southampton* - 18-hole new
St. Augustine, FL

Grand Reserve Golf Course – 18-hole new
Bunnell, FL

GreyStone Golf Club* – 18 hole new
Dickson, TN

Hammock Dunes Creek Course – 18-hole new (project management)
Palm Coast, FL

Hidden Cypress Golf Club* - 18-hole new
Bluffton, SC

Ironwood Golf Course – 18-hole renovation
City of Gainesville, FL

Magnolia Point Golf & C.C.* – 18-hole new & 9-hole addition
Green Cove Springs, FL

Marsh Creek C.C.* – 18-hole new
St. Augustine, FL

Ocala Golf Club – 18-hole renovation
City of Ocala, FL

Okatie Creek Golf Club* - 18-hole new
Bluffton, SC

Osprey Cove Golf Course* – 18-hole new
St. Marys, GA

Scales Creek Golf Course* – 18-hole new
Homer, GA

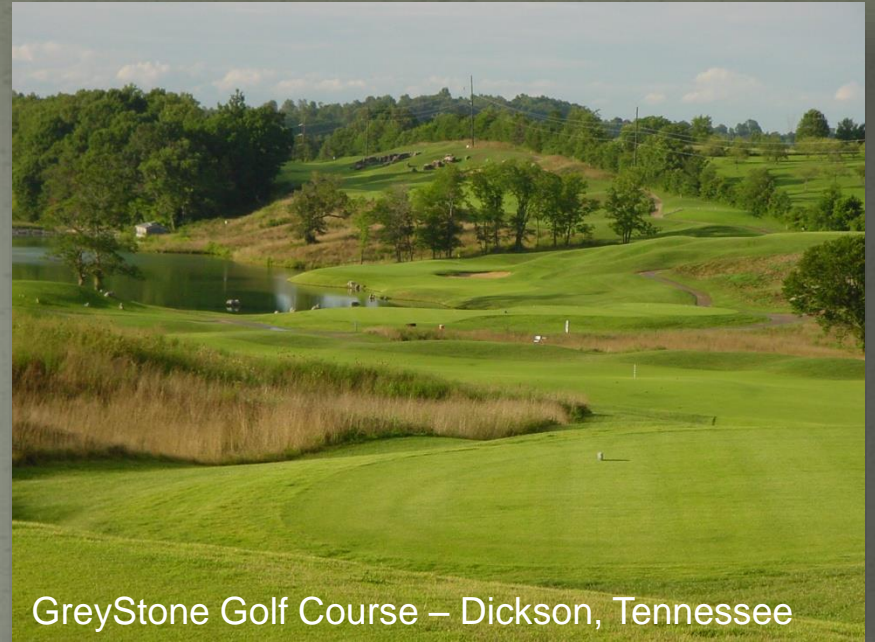
TPC Heron Bay* - 18-hole new
Coral Springs, FL

Woodmont Country Club – 9-hole renovation (peer review)
Tamarac, FL

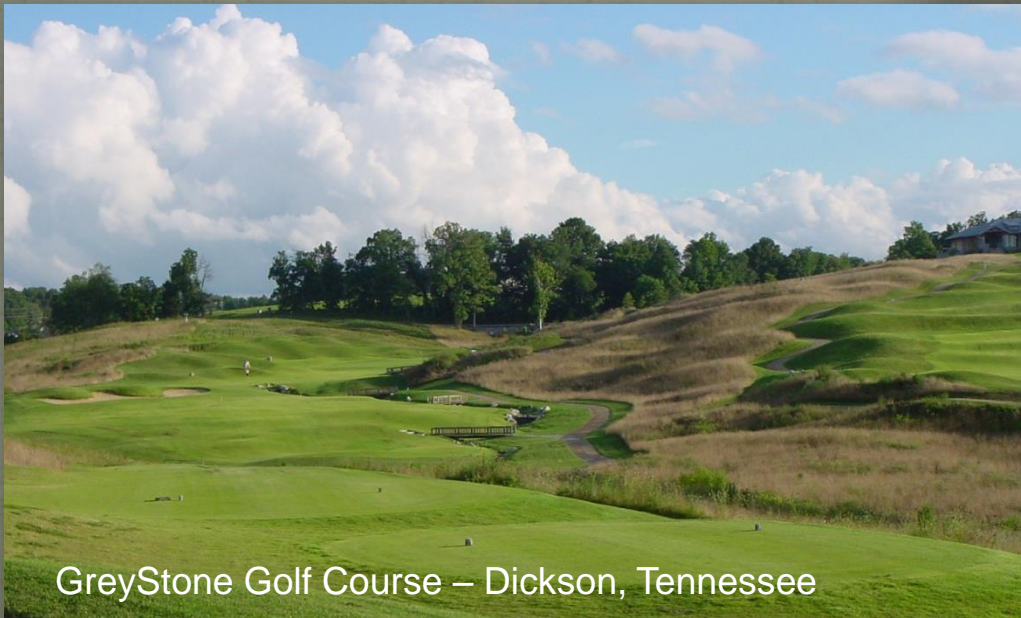
*Collaborative work with Mark McCumber



Ironwood Golf Course – Gainesville, Florida



GreyStone Golf Course – Dickson, Tennessee



GreyStone Golf Course – Dickson, Tennessee

"Bunkers, if they be good bunkers and bunkers of strong character, refuse to be disregarded, and insist on asserting themselves; they do not mind being avoided, but they decline to be ignored."
- JOHN LOW



Hidden Cypress Golf Club – Bluffton, South Carolina

PROFESSIONAL SERVICES

“The best golfing grasses vary in color. They may be red, brown, blue, dark green, light green, yellow, and at times even white and gray. A golf course that is consisted entirely of one shade of green would be merely ugly. There is great charm and beauty in the varying shades of color on a golf course.” –

ALISTER MACKENZIE

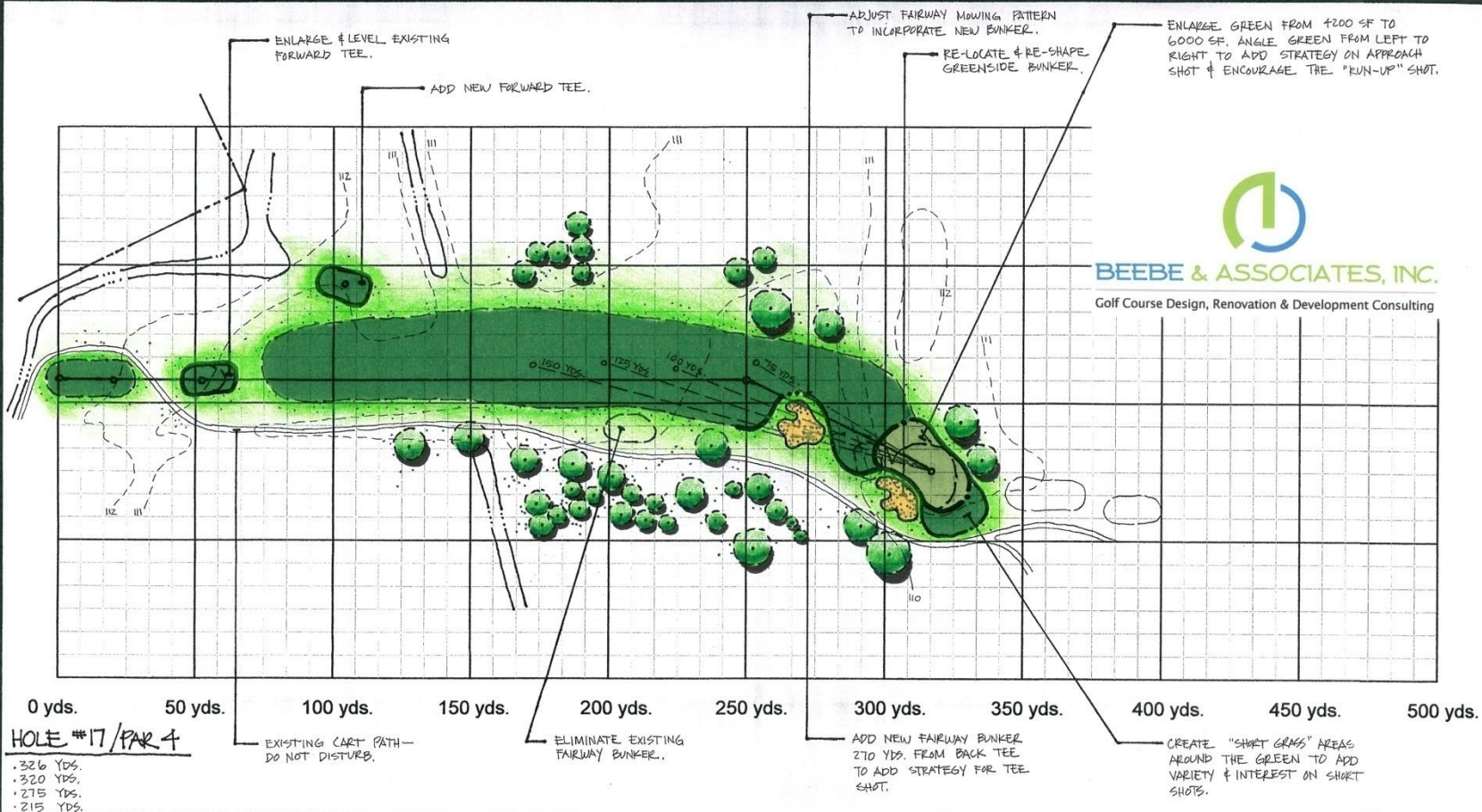
AVAILABLE SERVICES

- Golf Course Site Selection
- New Course Design
- Renovation & Long Range Improvement Plans
- Land Planning & Landscape Architecture
- Civil Engineering (Evergreen Engineering Group, Inc.)



Forest Lake Club – Columbia, South Carolina

- Project Entitlements & Project Management
- Cost Estimates, Scheduling, Construction Bidding
- Feasibility & Operational Analysis



BEEBE & ASSOCIATES, INC.

Golf Course Design, Renovation & Development Consulting

SEBRING GOLF COURSE

Sebring, Florida

Date: March 2009

REMODELING STRATEGY

BEEBE & ASSOCIATES, INC. - Golf Course Architects

MICHAEL BEEBE, ASGCA

138 Palm Coast Parkway NE, #128, Palm Coast, Florida 32137

Phone: (386) 931-1202 Fax: (386) 446-8306 Email: michael@beebeassociates.com



SCALE 1"=100'

0 50' 100'

17

Sheet No.

REFERENCES

“The spirit of golf is to dare a hazard, and by negotiating it reap a reward, while he who fears or declines the issue of carry, has a longer or harder shot for his second, or his second or third on long holes; yet the player who avoids the unwise effort gains advantage over one who tries for more than in him lies, or fails under the test.” – GEORGE C. THOMAS Jr.

The following individuals may be contacted as references for my professional work.

Michelle Park, Assistant Director Parks, Recreation
& Cultural Affairs
City of Gainesville
2100 NE 39th Avenue
Gainesville, FL 32609
(352) 393-8364
parkma@cityofgainesville.org

John Zobler, City Manager
City of Ocala
201 SE 3rd Street
Ocala, FL 34471
(352) 572-0405
jzobler@ocalafl.org

Mike Pullen, President
Capstone Golf
707 Shores Blvd.
St. Augustine, FL 32086
(904) 753-0541
mpullen@capstonegolf.net

Keith Blayney, CGCSAA
Edmonton Petroleum Golf & C.C.
51320 Range Road 260
Spruce Grove, AB T7Y 1B1
(780) 470-0306
kblayney@epgcc.ab.ca



Sterling D. Colee, CPA
Costa Verde, LLC
St. Augustine, FL 32086
(904) 501-6306
sterling@cvscape.com

John Gay, Golf Course Superintendent
Forest Lake Club
P.O. Box 6806
Columbia, SC 29260
(803) 782-7248
jgay@forestlakeclub.com

"The object of golf architecture is to give intelligent purpose to the striking of a golf ball."
- MAX BEHR



Edmonton Petroleum Golf & C. C. – Edmonton, Alberta, Canada



Michael Beebe, ASGCA

Beebe & Associates, Inc.
250 Palm Coast Parkway NE
Suite #607, PMB 128
Palm Coast, FL 32137-8225

Phone: (386) 931-1202

E-mail: michael@beebeassociates.com

Web site: www.beebeassociates.com



BEEBE & ASSOCIATES, INC.

Golf Course Design, Renovation & Development Consulting